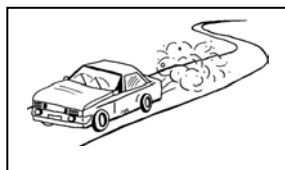


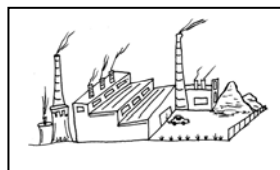
ANSWER KEY - ISSUES



carbon monoxide



urbanization



industrial pollution



bush fires

Industrial pollution such as smog is a type of air pollution consisting mostly of a mixture of sulphur dioxide. The suspended droplets of sulphuric acid are formed from some of the sulphur dioxide, and a variety of suspended solid particles.

Carbon monoxide is a colourless, odourless gas that is poisonous to (air-breathing) humans and animals and is formed during the incomplete combustion of carbon-containing fuels.

Urbanization is formed when a large number of people move into a city area, often caused by natural increase (more births than deaths) and by immigration, mostly from rural areas.

A **bushfire** is a wild fire in the bush, scrub or forest, either deliberately lit or started by accident such as by lightning.

Suggested Activity:

Choose one of the local examples and research in depth this particular environmental issue. If it is a problem issue, what is being done about the problem? Are there any benefits of having this issue locally, if so list them.

Outcomes:

Science – the environment, learn more about carbon monoxide, urbanization, industrial pollution, and bush fires.

English – reading, verbal communication, improve research skills.