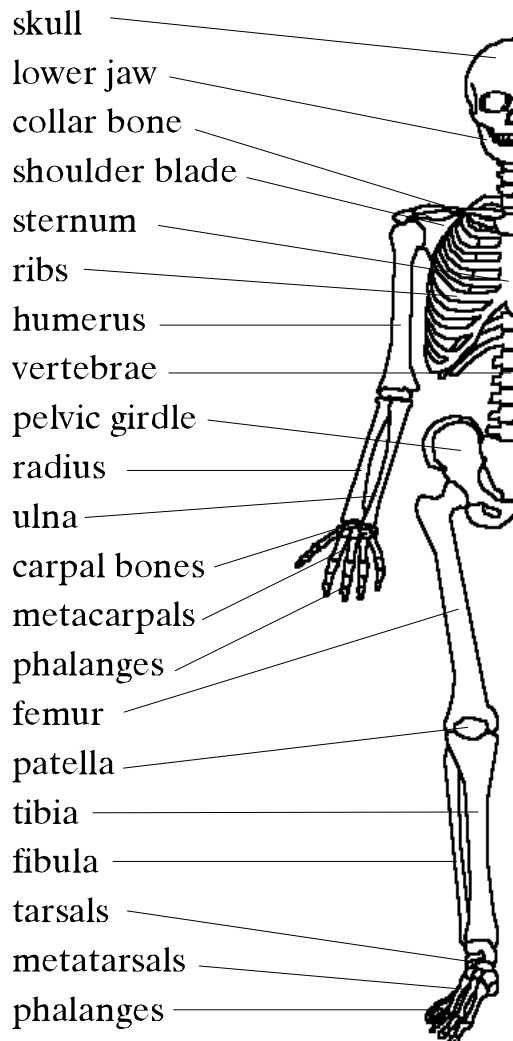


## Teacher's Note – The Skeleton



### *Suggested Activities:*

- ❖ Try and obtain a skeleton or a large poster displaying the skeleton.
- ❖ Have the children identify the bones on the skeleton without looking back at their worksheet for the answers.
- ❖ Use this worksheet in conjunction with 'The Human Body' worksheet. Available from P.E.T.

### **Task: Draw and label a skeleton**

**Learning Area: Health Education, health of individuals & populations**

**Linking Learning Areas: English reading, writing. Science biological.**