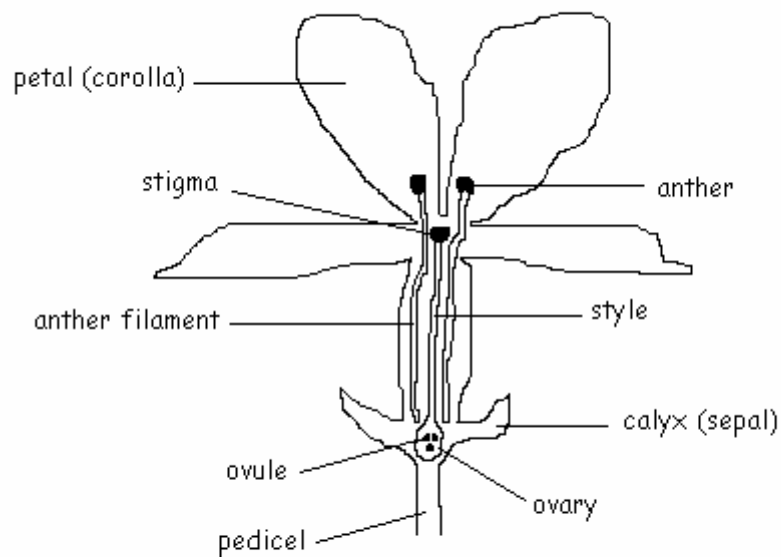


Answer Key – Flower diagram



Word meanings:

Androecium: male parts of a flower (the stamens of a flowering plant)

Gynoecium: female parts of a flower (the carpels of a flowering plant)

Outcomes:

English – word recognition, reading, writing

Science – recognize plants, plant parts

Suggested Activity:

Research a plant in the local area and write an essay. See student example at:

<http://www.teachingtreasures.com.au/K-10Projects/7-8Projects.htm>