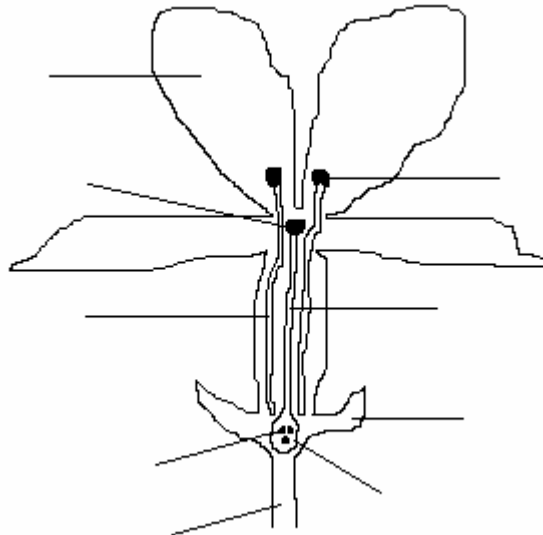


Name _____

Half Flower Diagram

A half flower diagram is an exact half of any particular flower vertically cut in half using a scalpel or a knife. Label the half flower diagram below.

petal, stigma, anther, ovary, pedicel, ovule, calyx, anther filament, style



Using a dictionary or other research tool, look up the following words and write down their meaning.

Androecium:

Gynoecium:

Go outside and find a flower, then using your artistic skills draw your specimen below. If possible find out the flower's proper name, if not... make up your own name for the flower.

Flower's name:
