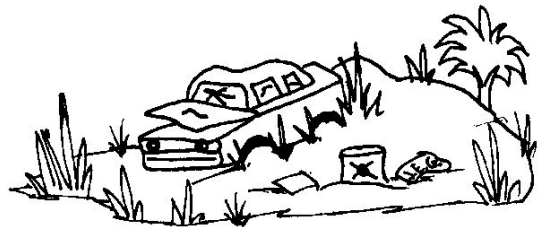
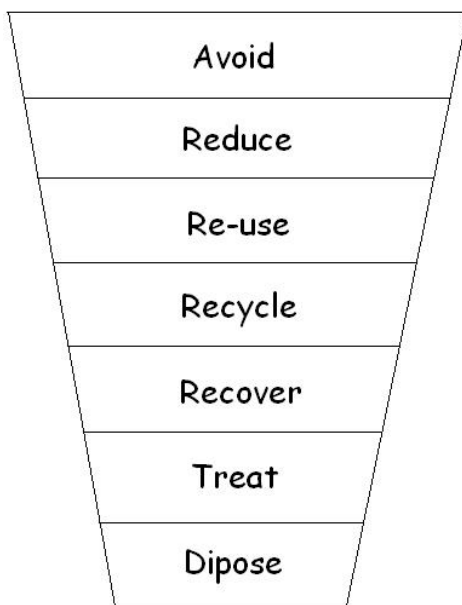


Name \_\_\_\_\_

## THE WASTE HIERARCHY



The waste hierarchy shows us the order in which we should deal with waste, with the most preferred solution located at the top and the least desirable located going down towards the bottom. The number one solution is to 'avoid' the amount of waste we throw away.



Reducing the amount of waste we use is the next best solution. Re-using our waste or giving it to someone else that can use it comes next. Recycling is a big thing in today's society, but it is not that highly preferred because recycling uses energy and other resources.

Resource recovery is a range of activities used to treat several waste materials for different uses instead of landfill e.g. composting. Treating waste such as separating different materials is done also to reduce waste going to landfill e.g. green waste is treated and turned into mulch for gardens.

And finally we have disposal, which is located at the bottom of the hierarchy, because it is the least favoured option. All waste materials disposed of at a landfill site are either buried in the ground or incinerated.

*Below give an example of each of the hierarchy options.*

<b>avoid</b>	
<b>reduce</b>	
<b>re-use</b>	
<b>recycle</b>	
<b>recover</b>	
<b>treat</b>	
<b>dispose</b>	